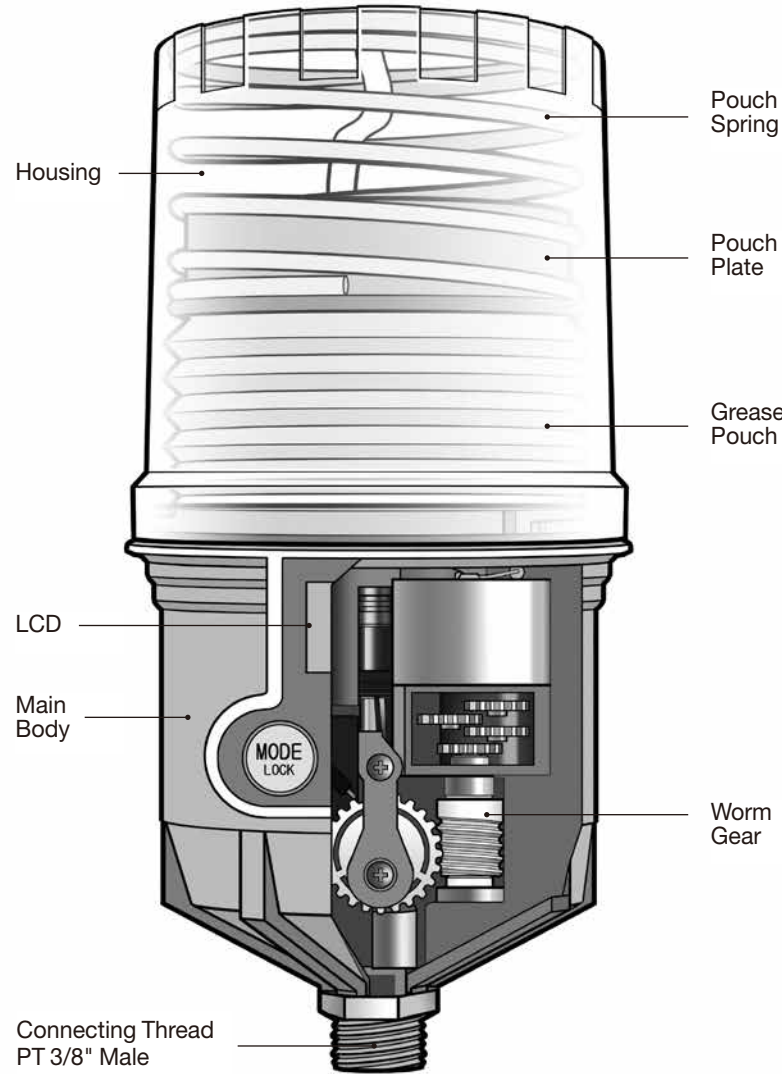
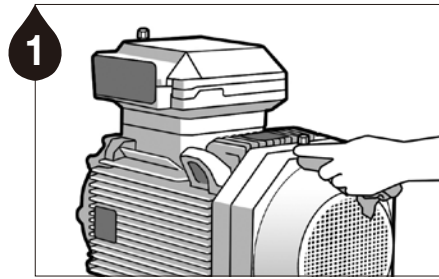


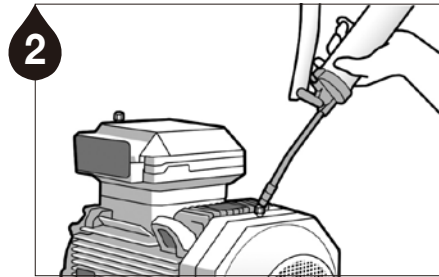
Product Details



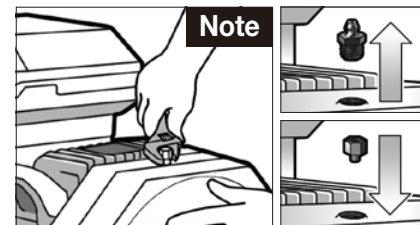
Installation/Disposal Guidelines



Remove contaminants around the lube point.



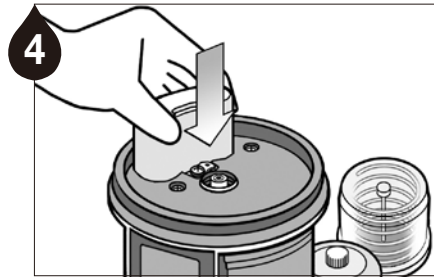
Ensure a clear passage using a manual grease gun. **Note1** Remove any hardened grease by purging the lube point with a manual grease gun. **Note2** The grease in the equipment and the grease contained in the unit should be the same or compatible.



Remove the grease nipple and install appropriate adaptors.



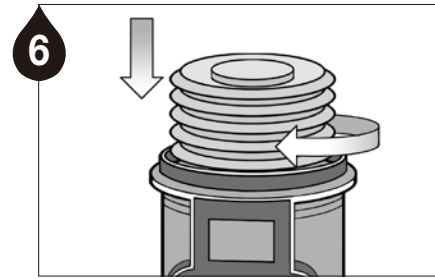
Check the grease pouch capacity and the service pack items (battery pack, grease pouch & dust cover).



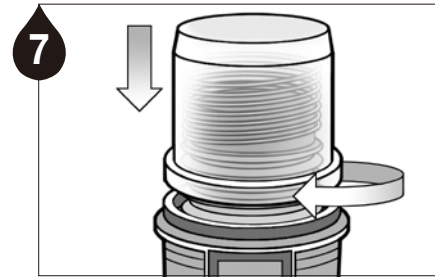
Insert battery pack.



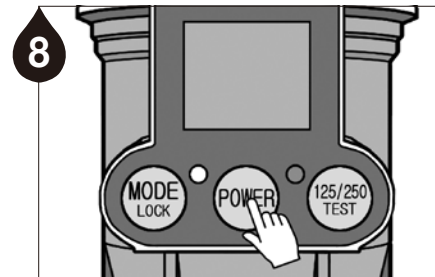
Purge the grease pouch until grease comes out of the tip.



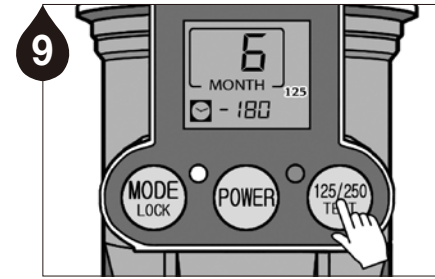
Carefully screw the grease pouch in by turning clockwise. Do not over tighten.



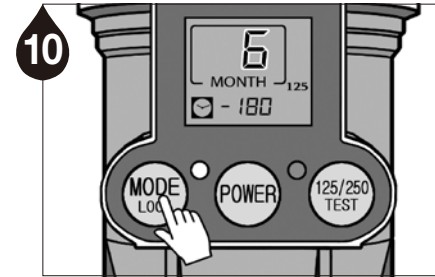
Refit the top housing on the unit and turn clockwise until it clicks.



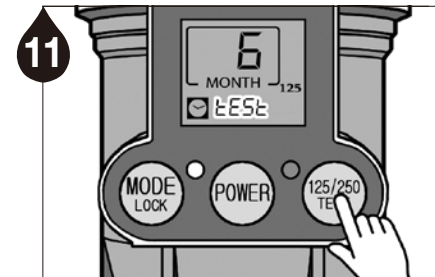
Press the POWER button for 2 seconds to turn the unit on.



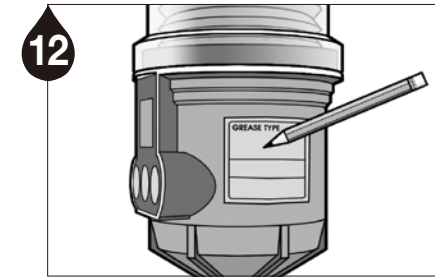
Select the appropriate grease pouch capacity by pressing the 125/250/TEST button.



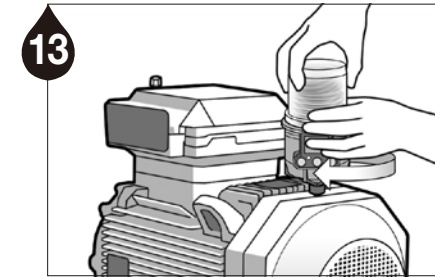
Press the MODE button to program the dispensing period.



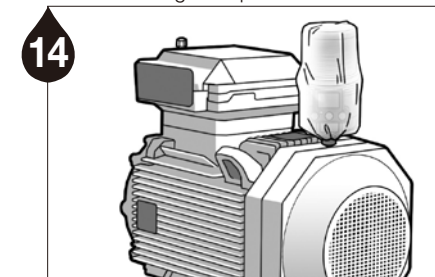
Press the TEST button for 2 seconds to run a test cycle and check for proper operation of the unit.



Note the installation date and the scheduled completion date of lube cycle on the lubricator using the label provided in the Service Pack for maintenance purposes.



Install the Pulsarlube M unit on the lube point. When the selected dispensing period has completed, replace the unit with the Service Pack according to step #3-7.



Install the dust cover over the lubricator for added protection.

Troubleshooting Guidelines



**Symptom:** Blank LCD screen  
**Possible Cause:** Electrical malfunction of CPU or circuitry, battery problem  
**Solution:** Replace battery pack or press reset button to restart the lubricator. If the problem persists, contact your supplier.



**Symptom:** Low Battery Indication  
**Possible Cause:** Rapid power consumption due to improper storage or harsh operating conditions (temperature, humidity, or high backpressure).  
**Solution:** Store the battery pack in cool, dry place and choose proper battery type for application. Optional lithium battery pack is available for more advanced applications.



**Symptom:** Excessive Backpressure Indication  
**Possible Cause:** Excessive backpressure due to hardened grease, over-lubrication, ruptured lube line, long distance remote installation, etc.  
**Solution:** A) Check backpressure at lube point and/or lube line, B) check grease dispensing rate, C) reduce remote installation distance, or D) use manual grease gun to clear blockage.

## LCD Functions

**MODE LOCK**  
**Dispensing Period**  
 Press To Set Dispensing Period  
 Automatic Lock Out Mode  
 Press for 2 seconds to unlock (🔒)

**POWER**  
 Power **ON/OFF**  
 Press to Power unit On or Off

**Grease Capacity**  
 Press to select 60/125/250ml

**TEST**  
**TEST Mode**  
**ON:** Press for 2 seconds  
**OFF:** Short press of button (will stop after completion of ongoing cycle)

**For 125ml/250ml unit**  
**A)** Press the button to select 125ml or 250ml capacity **B)** Hold the button for 2 seconds to run a test cycle  
*\*A quick press of the button will stop the test cycle mode*

## LCD Displays

 **6**  
 MONTH  
 Dispensing period setting


 **- 180**  
 Remaining dispensing days

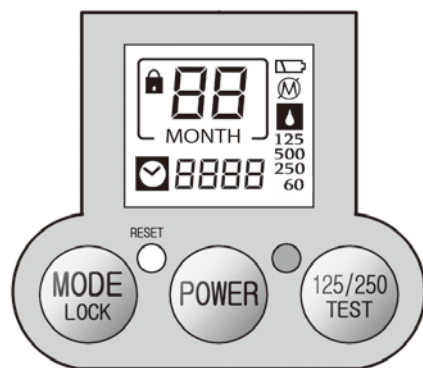
  
 Automatic Lock Out mode

**125/250**  
 Grease pouch capacity  
**(default setting : 125ml)**

**60 or 500**  
 Grease capacity

 **TEST**  
 TEST mode

 **5603**  
 Number of days since the cycle ended (🔒 and 🔌 will also display)



**RESET**  
 Reset to default setting when the unit malfunctions and/or after changing the Service Pack

 **003**  
 Number of days operation has been on hold due to excessive backpressure

  
 Low battery power

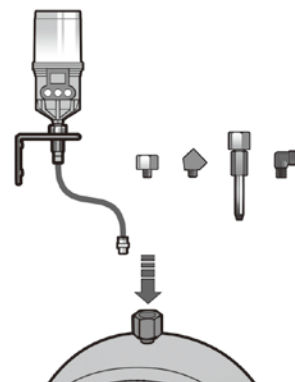
  
 Operation on hold due to excessive backpressure

  
 Empty grease level

 **Red LED**  
 LED blinks when battery is low, excessive backpressure exists, or grease level is empty

**ISO9001/14001 CE**

## Mounting Methods



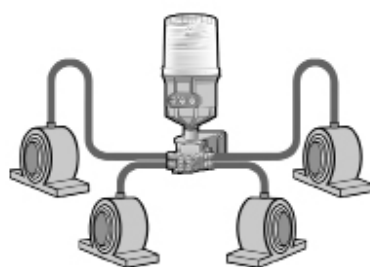
### Single Point Installation

#### Direct Mount or Remote Installation using Extension Tube

Direct mount is always preferable.

For applications not allowing any direct mounts, remotely mount the unit using appropriate accessories and keep the distance from the lube point as short as possible.

For remote installation using a tube, use a 6mm O.D. (1/4") tubing pre-filled with the same or compatible grease as the grease contained in the unit.



### Multi-Point Installation

#### Multi-Point Remote Installation using Progressive Divider Block (2~8 Points)

Remote multi-point lubrication is available with the Pulsarlube M using a divider block.

It is recommended to test the back pressure of the bearing, lube lines, and divider block after assembly using a grease gun connected to a pressure gauge. Ensure the break-off pressure is below the average operating pressure of 30bar (435psi).

### Warning

- ▶ For remote installation, keep the maximum distance at 6m (20ft) or less.
- ▶ Do not plug any open ports on the divider block. The kit or divider block must be ordered with the appropriate number of points required. For more information on the divider block, please refer to the Multi-Point Remote Installation Manual.
- ▶ Use the lithium battery pack for specific applications such as: extremely cold temperature, long period mode setting (18M, 24M), or multi-point remote installation for M 500ml unit.

**Shelf life and Warranty Product** Warranty is limited to original defects in material and workmanship and will not cover any collateral damage due to mishandling, abuse and /or any other inappropriate use of this product. Warranty period is 1 year from the date of purchase.

Rev.03

# PULSARLUBE

The World Leader of Automatic Lubrication

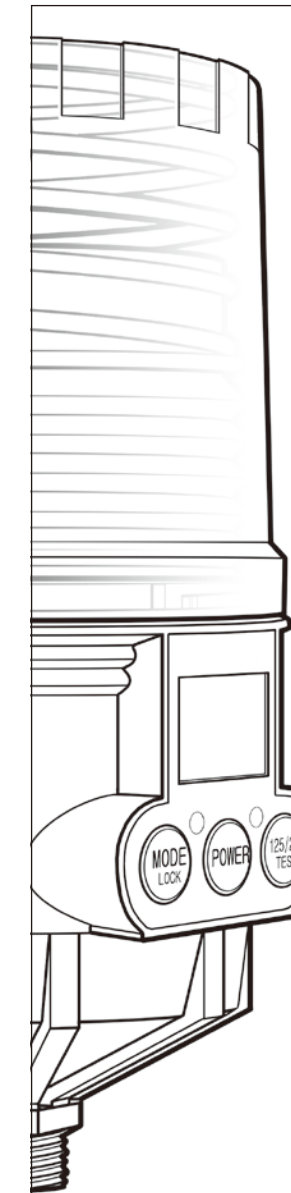
**PULSARLUBE**

User Manual

# Pulsarlube M

## Series

(60ml/125 & 250ml/500ml)



### Pulsarlube USA, Inc.

1480 Howard Street, Elk Grove Village, IL 60007, USA

TEL:1-847-593-5300 FAX:1-847-593-5303 www.pulsarlube.com / info@pulsarlube.com